

After performing a repair, run the monitor to make sure it is fixed. Next, look at how to run a Drive Misfire Monitor.

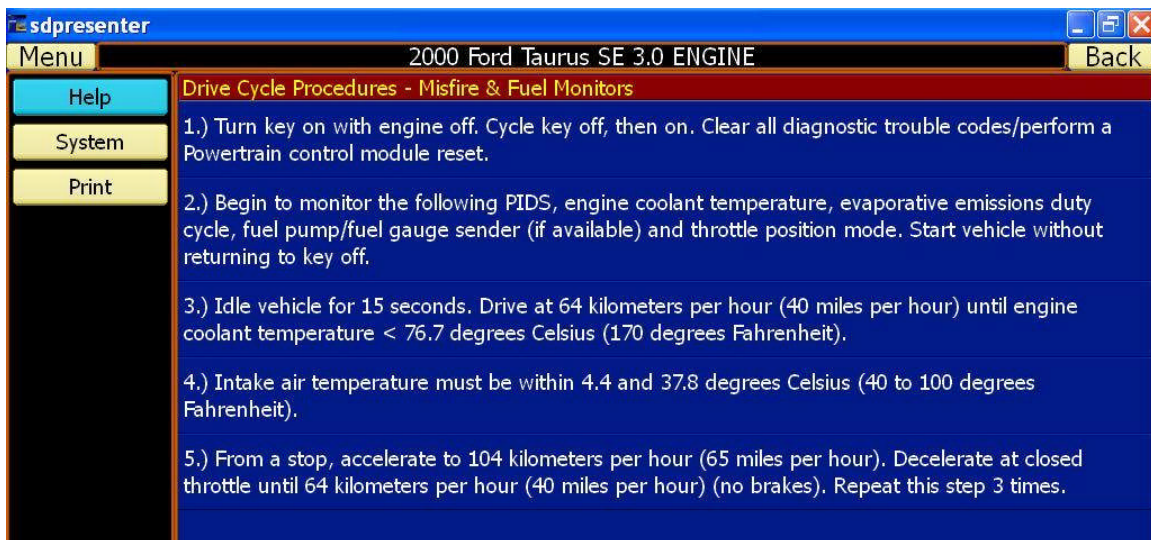


Figure 1 Pegisys Drive Cycle.

It is important to reset the adaptive strategies to make sure the vehicle goes back to the base memory tables. The procedure is reset KAM or Keep Alive Memory. This step one in the Drive Cycle procedure.

Use the Special Tests or find it on your scan tool.

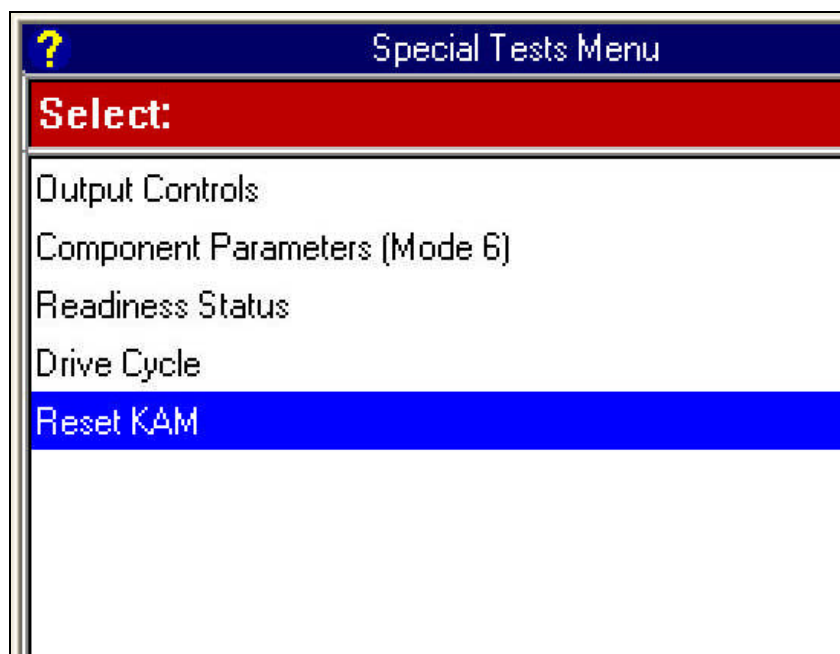


Figure 2 Genisys Reset KAM Screen

Follow the next steps in the procedure; make sure to use some precautions to prevent accidents. Use your four way flashers and a less traveled road.

The vehicle will learn the MAF and Misfire while running this monitor.

When the monitor is complete, make sure by checking the Misfire Profile Learn PID in data stream.

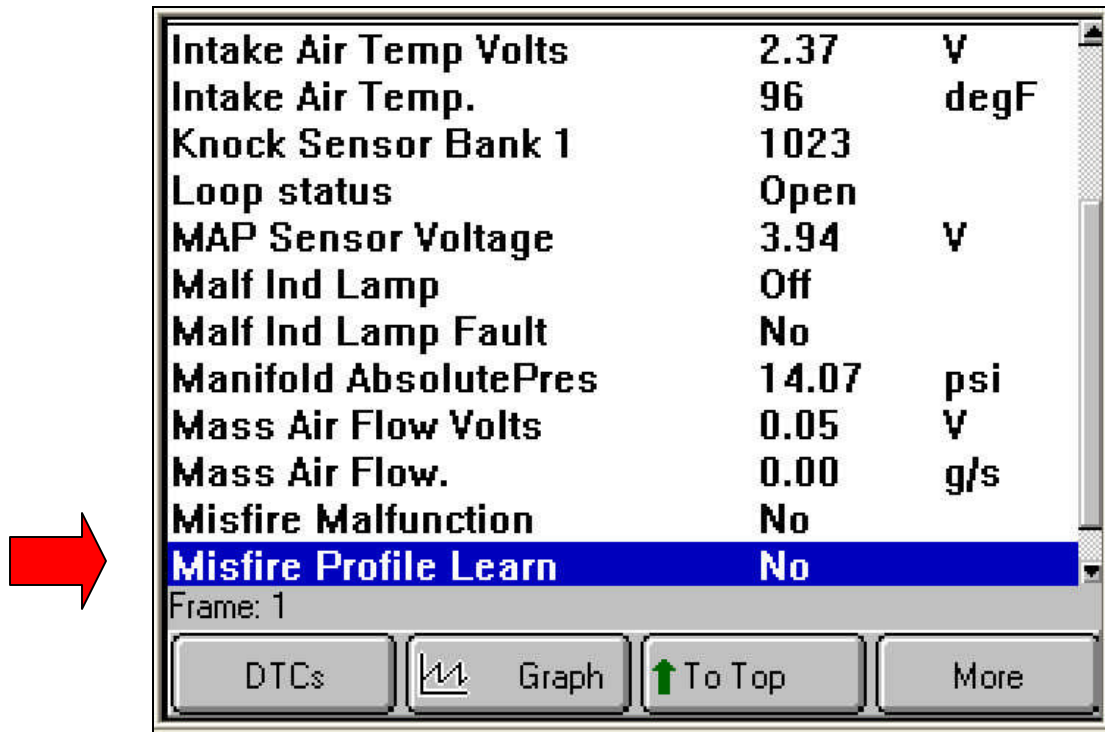


Figure 3 Genisys Misfire Profile Learn PID

If it does not say yes then it has not run the Drive Cycle and has not learned to find misfires. Start all over again to run the Drive Cycle until the Misfire Profile Learn shows yes.

This Ford was missing but did not register misfires in Mode \$06.

Remember these steps:

Reset KAM

Run the Drive Cycle/Monitor

Check the Misfire Profile Learn

Next, check the data to verify the repair.

Hope this helps!